

# Evaluation of patients presenting with hematochezia (Bright red blood per rectum)

Author: MaineGeneral Gastroenterology

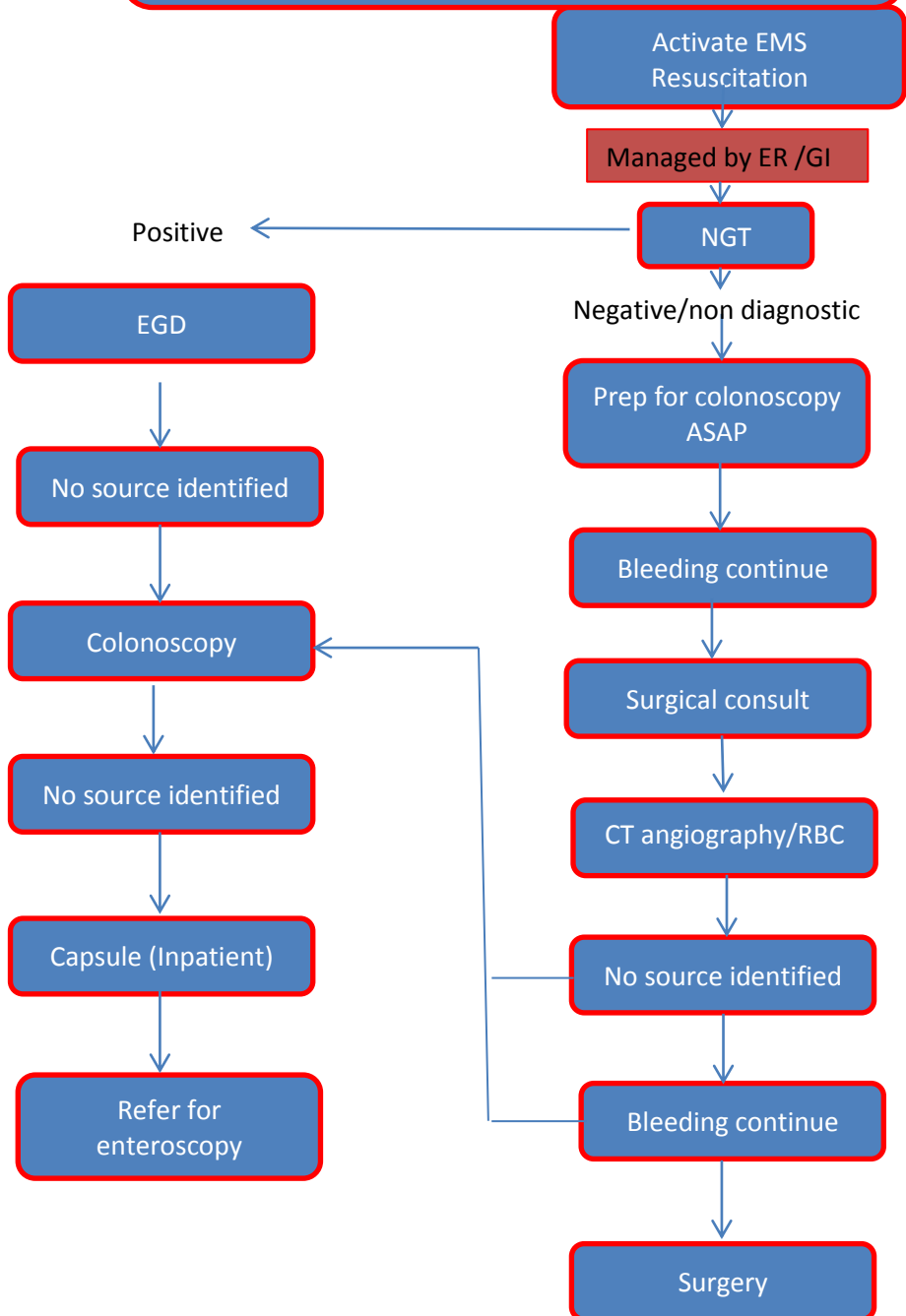
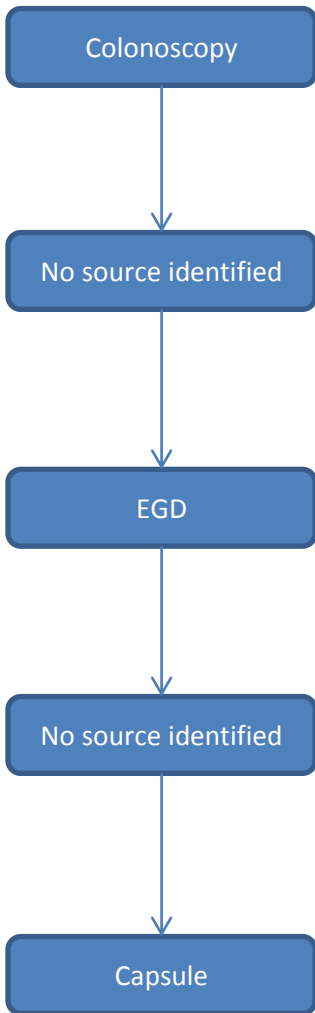
Date: 5/11/2016 Rev. 9/21/16

Order labs incl. Hematocrit. Rectal exam and V/S.  
Anoscopy if available. No source identified

Stable  
Vital signs & HCT normal

Unstable

Hemodynamic instability, volume deficient sx including Low BP, increased pulse, Low HCT, lightheadedness, syncope.  
Persistent & ongoing bleeding, requiring transfusion



# **Evaluation of patients presenting with hematochezia (Bright red blood per rectum)**

Author: MaineGeneral Gastroenterology

Date: 5/11/2016 Rev. 9/21/16

## **Practice Guidelines and Standard Processes Disclaimer**

To promote the provision of efficient and effective healthcare services, Kennebec Region Health Alliance helps develop and disseminates practice guidelines for use by its member practices. Such guidelines are based upon various sources that KRHA believes to be reliable, which may include but is not limited to, guidelines from widely recognized professional societies, boards and colleges such as the American Medical Association (AMA). Practice guidelines are reviewed at least every two years and updated as necessary to reflect changes in medical practice.

These practice guidelines are not meant to express standards of care and should not be regarded as evidence of such standards. These Guidelines describe criteria for general operating practice and procedure and are for voluntary use. Guidelines are not a substitute for a physician's or healthcare professional's independent judgment.

Information on this website should not be relied on as an alternative to medical advice from a physician or other healthcare professional. If there are specific questions on any medical matter, a physician or healthcare professional should be consulted.